

April 3, 2024

CHAMBER CONNECTIONS

LATEST HAPPENINGS

UPCOMING EVENTS

Join Mark Losh, CEO Missoula Chamber,
Every 3rd Thursday at 9 am

MISSOULA CHAMBER'S ABC's HOUR



APRIL GUEST

Scott Billadeau &
Chef Justin Ferguson
Liquid Planet Corp



89.3 FM
newstalk **KGVO**.com
1290 AM



Mark Losh, the Missoula Chamber CEO is back at the mic every 3rd Thursday at 9am on Talk Back Missoula KGVO. Set aside the time to listen and/or call in to talk to the Chamber.

Listen Now link: <https://newstalkkgvo.com/>

State of Missoula - Missoula NOW RAFFLE DRAWING

WIN 2 round trip tickets & hotel for 3 nights at Caesar's Palace & Casino
Attend Las Vegas Raiders game at Allegiant Stadium

MUST BE PRESENT TO WIN



Missoula Chamber of Commerce - State of Missoula
April 23 2024

Souls & Deals Sports Marketing and Entertainment is proud to donate to the winner a weekend package (\$7500 value) to see the Las Vegas Raiders at Allegiant Stadium. This package includes 2 round-trip airline tickets and hotel accommodations for 3 nights at Caesar's Palace Hotel and Casino.

Presented By
Sheena Pesant and Bert Tabor



This package is good for one regular season game of the 2024-25 NFL football season.
This package is not transferable and cannot be sold.
Souls & Deals is fully responsible for this package not the Missoula Chamber of Commerce.

Souls & Deals Sports Marketing & Entertainment
3765 Sunset Rd Ste B09 | Las Vegas, NV, 89120
P: 702-503-4533
Bert@soulsanddeals.com

[REGISTER FOR STATE OF MISSOULA](#)

April 3, 2024

CHAMBER CONNECTIONS

LATEST HAPPENINGS

UPCOMING EVENTS



2024 State of Missoula: MISSOULA NOW

Panel Speakers



**Tuesday, April 23rd,
11:00am - 1:00pm**
University of Montana,
UC Ballroom

Members & non-members welcome!

ADDITIONAL INFO

Contact Laura at
lauras@missoulachamber.com

REGISTER HERE



The State of Missoula is not merely a reflection but a live narrative, offering an exclusive opportunity to delve into the very pulse of our community.

Representatives from each organization will take the stage & together, we will explore the latest developments, initiatives & undertakings of these organizations, providing a comprehensive overview of what is happening right now in every corner of our vibrant city.

Thank You to Our Sponsors



32nd ANNUAL RED RIPPER

GOLF TOURNAMENT

Missoula Country Club
May 3rd

THANK YOU for helping us
sell out our golf teams!

**Contact Laura for
Sponsorship Opportunities!**

406-303-8764



REGISTER

April 3, 2024

CHAMBER CONNECTIONS



NETWORKING OPPORTUNITIES

APRIL NETWORKING

MISSOULA CHAMBER OF COMMERCE INVITES YOU TO:

BUSINESS AFTER HOURS

FR1ENDS of the CHILDREN
Montana

**DOOR PRIZES!
BEER & WINE!
AND NETWORKING!**

Tuesday, April 9th, 5-7pm

Farmers State Bank
3200 Brooks St,
Missoula, MT 59801

NO REGISTRATION NECESSARY!
Thank you to our Beverage Sponsors

ZIP BEVERAGE Coca-Cola

When is the next MYP event?

MISSOULA
YOUNG PROFESSIONALS
Missoula Area Chamber of Commerce

Tuesday, April 16, | 5-7 pm

As always - the third Tuesday of the month!

Host Information Coming Soon

Thank you to our beverage sponsors

Thank you to our corporate sponsors

April 3, 2024

CHAMBER CONNECTIONS

MEMBER CONNECTIONS



3rd Annual Serenity SCRAMBLE 2024 GOLF TOURNAMENT
TO BENEFIT **The Fourth D Club** MISSOULA

TEAM REGISTRATION OPEN

REGISTER TODAY

★ **FRIDAY JUNE 21ST, 2024** ★
KING RANCH GOLF COURSE
FRENCHTOWN, MT.

HOLE AND RAFFLE PRIZES | **\$450 PER 4 PERSON TEAM** | **9:00 AM SHOTGUN START**

Hotdogs and hamburgers post tournament for participants. Beverage cart on course. Mulligans will be available for sale.

Everyone is Welcome!
Register: <https://4thdmissoula.org/2024-serenity-scramble>

Internship Assistance

Have you ever considered hiring a summer intern to assist with marketing, accounting, sales, human resources, project management or other business projects?

Now is a great time to partner with the University of Montana College of Business for help identifying the talent you need. Our Student Success Team can promote open positions, help you create an internship and launch an internship program.

Reach out to Michelle at Michelle.Schwartz@umt.edu to learn more.



CHAMBER CONNECTIONS

MEMBER CONNECTIONS



MCPS
Where Learning and Safety Matter!



LEVY INFORMATION
- ALL-MAIL ELECTION -
BALLOTS DUE MAY 7, 2024

General Fund Levies

A school district's General Fund budget is calculated based on a formula defined in state law, and based on the school district's prior year enrollment. The state funding formula sets both the minimum and maximum General Fund budget, as well as the levy amount that a school district can request of local voters. The state budget limit and other school district budgets do not grow as a result of increases in local property values.

General Fund Levies provide funding for a school district's normal operating expenses:

- Staffing**
 - Teachers & paraeducators
 - Custodial/grounds/trades
 - Clerical & office support
 - Health & nursing services
- Teaching & Learning**
 - Instructional materials
 - Programs & Supplies
- Operating Expenses**
 - Insurance
 - Utilities - electricity, heat, water, garbage disposal, etc.

Safety Levies

School safety and security are top priorities for MCPS staff, students, families and the Missoula community.

The State of Montana does not provide funding specifically for safety and security projects at public schools.

The Safety Levies will raise a total of approximately \$2.5 million to help make our school communities safer through investments in:

- Prevention**
 - School counselors
 - Behavior interventionists
 - Mental health support
- Intervention & Education**
 - School Resource Officers
 - Safety specialists
 - Safety training and curricula for staff & students
- System Maintenance & Upgrades**
 - Secure entries and doors
 - Camera and intercom systems
 - Visitor management system

General Fund Levy Requests

Elementary District

- Total levy amount: \$105,134
- Cost: \$0.79/year per \$100,000 in assessed property tax value

High School District

- Total levy amount: \$405,627
- Cost: \$1.65/year per \$100,000 in assessed property tax value

Safety Levy Requests

Elementary District

- Total levy amount: \$1.5 million
- Cost: \$11.24/year per \$100,000 in assessed property tax value

High School District

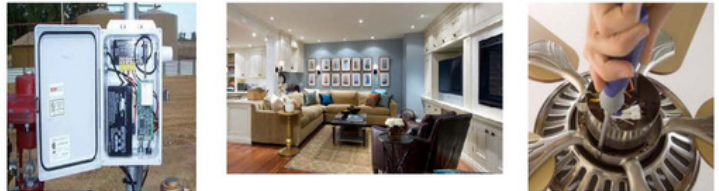
- Total levy amount: \$1 million
- Cost: \$4.08/year per \$100,000 in assessed property tax value

To Learn More:

- Scan the QR code below
- Visit www.mcpsmt.org
- Connect with your neighborhood school principal



Need a commercial or residential remodel completed?



Anchor Electric is a locally owned and operated electrical contractor. Our electricians are fully equipped to handle any residential or commercial remodel.

Digging on your property?



You're on top of it. We'll tell you what lies beneath. Call Anchor today to schedule your private locate.

CHAMBER CONNECTIONS

MEMBER OPPORTUNITIES

[2023 Sponsorship Guide](#)

[Committees](#)

[Board of Directors Application](#)

MEMBER SERVICES

[Portal Log-In](#)

[Job Board](#)

[Meeting Room Rental](#)

[eBlast Instructions PDF Download](#)

NETWORKING EVENTS

MISSOULA CHAMBER
BAH
BUSINESS AFTER HOURS


MISSOULA
YOUNG PROFESSIONALS
Missoula Area Chamber of Commerce

[Leadership Missoula](#)



BUSINESS RESOURCES

[Workforce Resources Links](#)

JOB BOARD

[Sign-up for JOB ALERTS](#)

You'll receive an email when new jobs are posted

[Member FAQ](#)

[Using the Member Portal](#)

[Staff Contact Information](#)

We preserve and advance the quality of life in Missoula by advocating for a healthy, responsible and diverse business environment and by providing resources that help businesses succeed.

Missoula Area Chamber of Commerce Mission