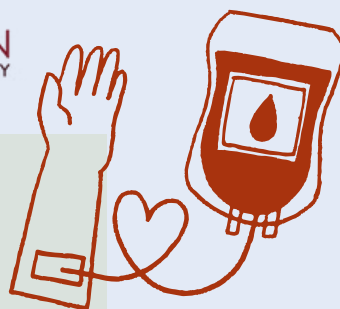


# CHAMBER CONNECT

FEBRUARY 13, 2025



**American  
Red Cross**



**Hellman insurance and  
American Red Cross are  
hosting a blood drive!**

**MARCH 13TH  
SNACKS BY TEXAS  
ROADHOUSE**



**Keep Missoula Housed**



**Premier Movie Night with  
KEEP MISSOULA HOUSED  
(formerly DubbersCare)**



**MARCH 4TH  
Raffle for a weekend at  
Quinn's Hot Springs!**



# ST. PATRICK'S DAY SCHEDULE

SATURDAY, MARCH 15 2025



## MASS OF ST. PATRICK

Join the Friends of Irish Studies in the West (FISW) for the annual mass in honor of Saint Patrick at the Francis Xavier Church, on Saturday, March 15 at 8:00am.

8:00AM



## ST. PATRICK'S DAY PARADE

The FISW & Ancient Order of Hibernians Parade celebrates rich Irish heritage by showcasing Irish culture, music and dance. This family-friendly event will start in Downtown Missoula and is free to be enjoyed by all.

12:00PM



## WHISKEY TASTING & FREE CAROUSEL RIDES

Enjoy delicious whiskey at the Rhino Bar and free carousel rides at Dragon Hollow - fun for the whole family!

2:00PM



## FISW BANQUET DINNER

Support FISW at our annual dinner banquet at the Holiday Inni! Enjoy delicious food, live entertainment, and bid on exciting items in our silent and live auctions. Tickets available online. All proceeds support our mission.

6:00PM



FURTHER  
INFORMATION

[friendsofirishstudies@gmail.com](mailto:friendsofirishstudies@gmail.com)

[www.friendsofirishstudies.com/st-patricks-day](http://www.friendsofirishstudies.com/st-patricks-day)

# CHAMBER EVENTS

MISSOULA CHAMBER OF COMMERCE  
INVITES YOU TO:

## BUSINESS AFTER HOURS

 **greater good health**

Tuesday | March 11th | 5-7 pm

FOOD PROVIDED BY:



CO-HOSTED BY:



Thank you to our Beverage Sponsors



LOCATION:  
2230 N Reserve St Suite  
110, Missoula, MT 59808

Hosted by the Red Coats Committee, Business After Hours (BAH) offers relaxed networking in various Missoula venues. Held every 2nd Tuesday at a Chamber member's business, attendees are able to network, win door prizes, and get updates on Chamber initiatives. Join us for a vibrant evening of connections and camaraderie!

Missoula Young Professionals (MYP) aims to empower professionals looking to further develop their Missoula network and grow personally and professionally. Through monthly events sponsored by a Chamber member business, attendees are able to make career connections through networking - & win some great door prizes! Join us every 3rd Tuesday!



# MARCH MYP event

MARCH 18, 2025 | 5:00PM - 7:00PM  
601 S 3RD ST W, MISSOULA, MT 59801



# PAWS UP

MONTANA

THANK YOU TO OUR CORPORATE & BEVERAGE SPONSORS!



# MEMBER CONNECTION




Missoula **MARKET WATCH**  
Commercial Real Estate 2025

**SterlingCRE**  
ADVISORS

Join Us  
**Missoula MarketWatch™**  
TUE. MAR 4 | 2PM-4PM | THE FLORENCE BUILDING

Make informed business and investment decisions with data-driven insights only available from Sterling Commercial Real Estate Advisors.

[Learn More →](#)



**UNITED WAY**  
Missoula County

**ROOM 131**  
productions

**LAUGH UNITED<sup>2</sup>**

An evening of original sketch comedy by Salina Chatlain performed by some of your favorite Missoulians to support United Way of Missoula County

Rosie Ayers  
Brennan Buhl  
Salina Chatlain  
Carrie Collier

Clara Griffin  
Royce McIntosh  
KJ Olds  
Bridget Smith  
Teresa Waldorf  
Anne-Marie Williams

February 20, 2025 7:30pm  
Holiday Inn Downtown Missoula

[MissoulaUnitedWay.org/Laugh-United](http://MissoulaUnitedWay.org/Laugh-United)

Don't forget to use your EBLAST benefits!  
Contact the Chamber at [info@missoulachamber.com](mailto:info@missoulachamber.com)

# MEMBER CONNECTION



## MISSOULA **CHILDREN'S** THEATRE



**Join the Missoula Children's Theatre  
for a special Premiere Night Event!**



**THE CURIOUS INCIDENT OF  
THE DOG IN THE NIGHT-TIME**

Premiere Night is MCT's signature fundraiser and celebrates the opening of each Community Series production. Chamber Members are invited to join us on Thursday, March 5 at 6 pm for the premiere of *The Curious Incident of the Dog in the Night-Time*. Your special \$75 ticket price includes your ticket to the performance, a hosted bar, and catered appetizers and dessert.

**Tickets are limited - grab yours today  
to join MCT for this special evening!**

Call the MCT Box Office at (406) 728-7529  
Monday - Friday between 12-5 pm to reserve your  
tickets - *remember to mention that you're a  
Chamber member!*

Please note this production is rated R. Sensory Advisory: Much of this play  
uses lighting effects (including strobe lights) and projections.



**Don't forget to use your EBLAST benefits!**  
Contact the Chamber at [info@missoulachamber.com](mailto:info@missoulachamber.com)